

## DCPs for Festivals & Screenings

### Things you need to know:

- Cinema projectors can only ingest a certain file type for projection: a **DCP**
- They can only recognise certain hard-drive formats: **Extended Filesystem**
- We cannot test the DCP file here, so you must follow instructions carefully, and where possible, always get time to test them in the cinema first.

### How to make a DCP using DCP-o-matic:

This is very easy to do, and once set up, it usually takes just a little longer than real-time transcoding – for a 20 minute film, it should take about an hour to make the DCP.

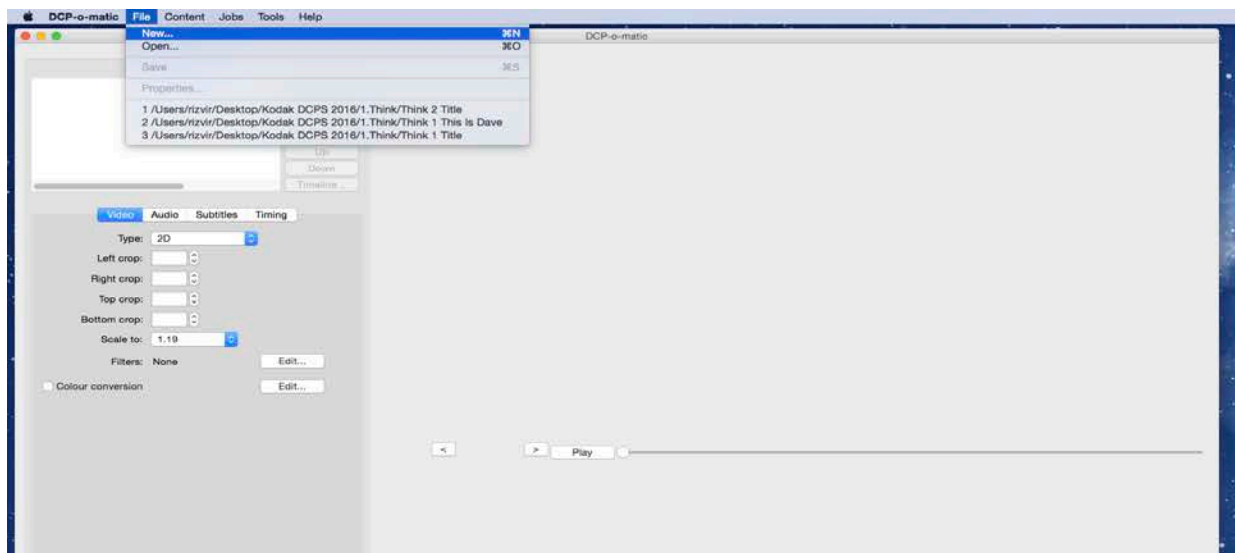
#### STEP 1. HAVE YOUR FILE READY

Very simply, you'll need to be using your master file to make the DCP, which will always output at 2K minimum. Don't worry if your file isn't 2K, it will still come out at the best possible resolution. Any text/subtitles should be burned in and you should have the relevant sound levels required. Make sure there is no more than 3 secs black at start/end.

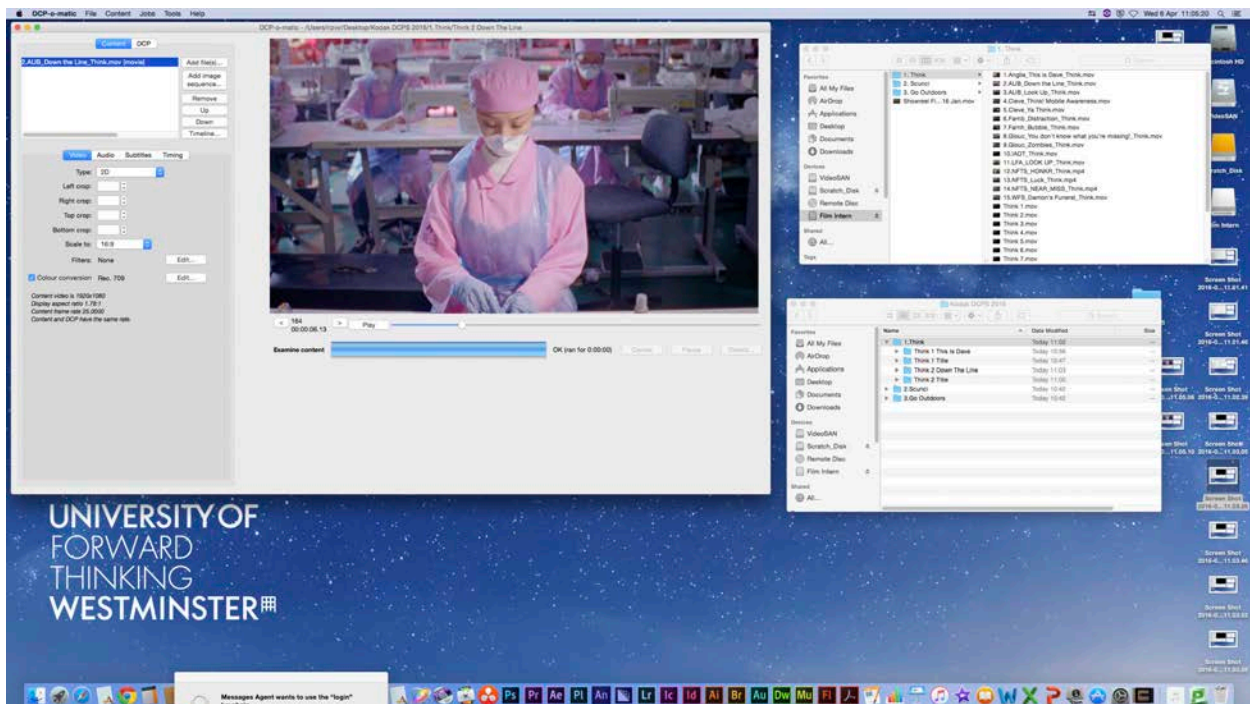
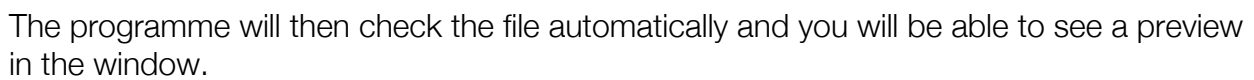
#### STEP 2. OPEN DCP-O-MATIC APPLICATION

All of the Edit Suites upstairs have DCP-o-matic installed, and it's a free app that you can download from the internet.

Create a new file, name it, and make sure you know where it's saving.

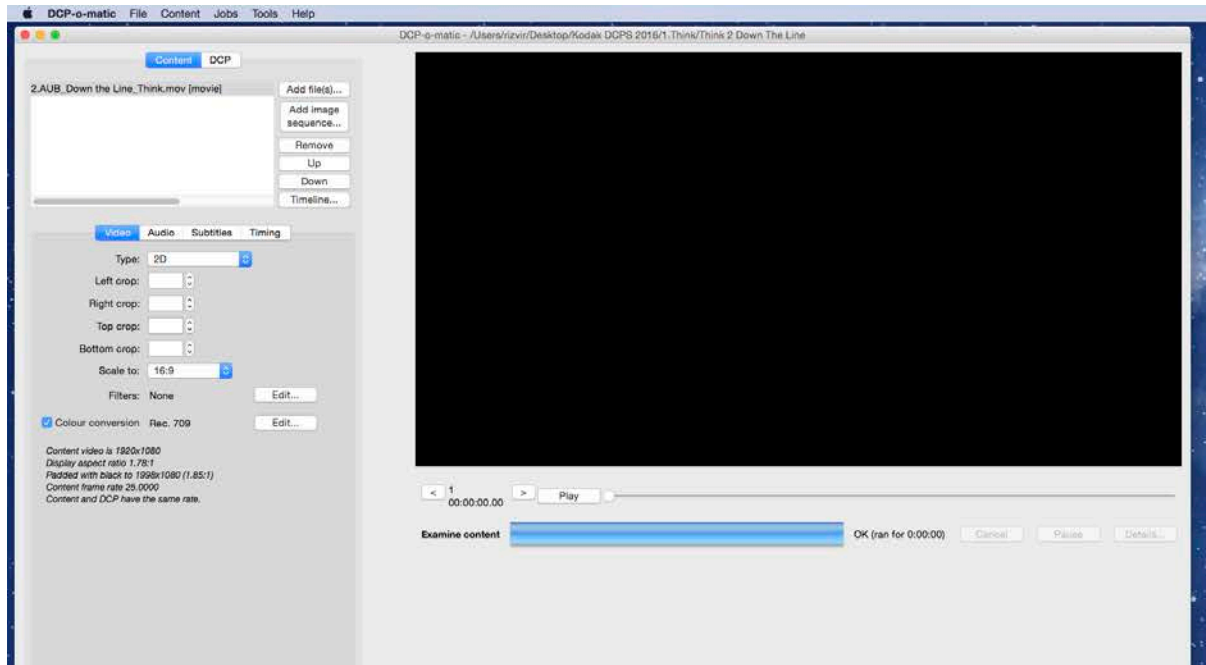


Click Add File and choose the relevant film file.



## STEP 4. SET YOUR CONTENT

These are really important – as you can't check the file, you need to be very sure before you create the DCP, that all of the settings are set correctly. When setting the content, ensure the preview pane has someone's face in it so you can look out for stretching errors

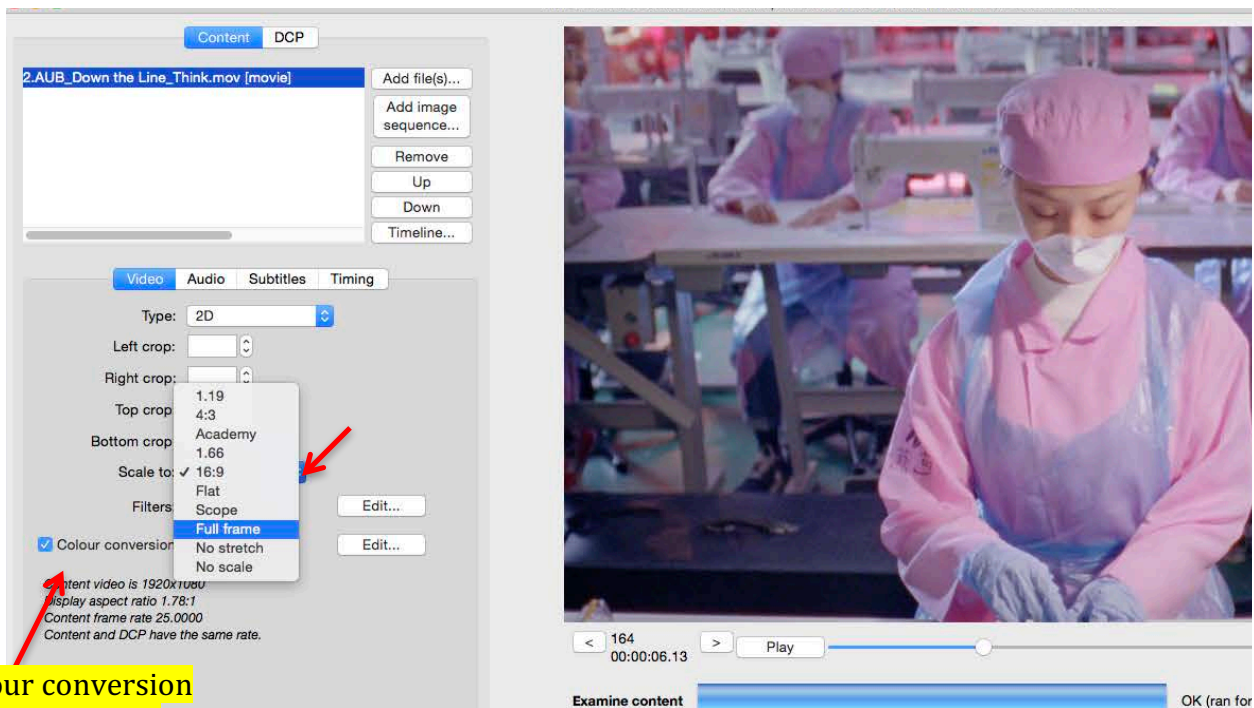


### Settings

Leave Type: 2D

Leave Colour Conversion TICKED

Change Scale: Set to your aspect ratio



**Colour conversion  
(leave ticked)**

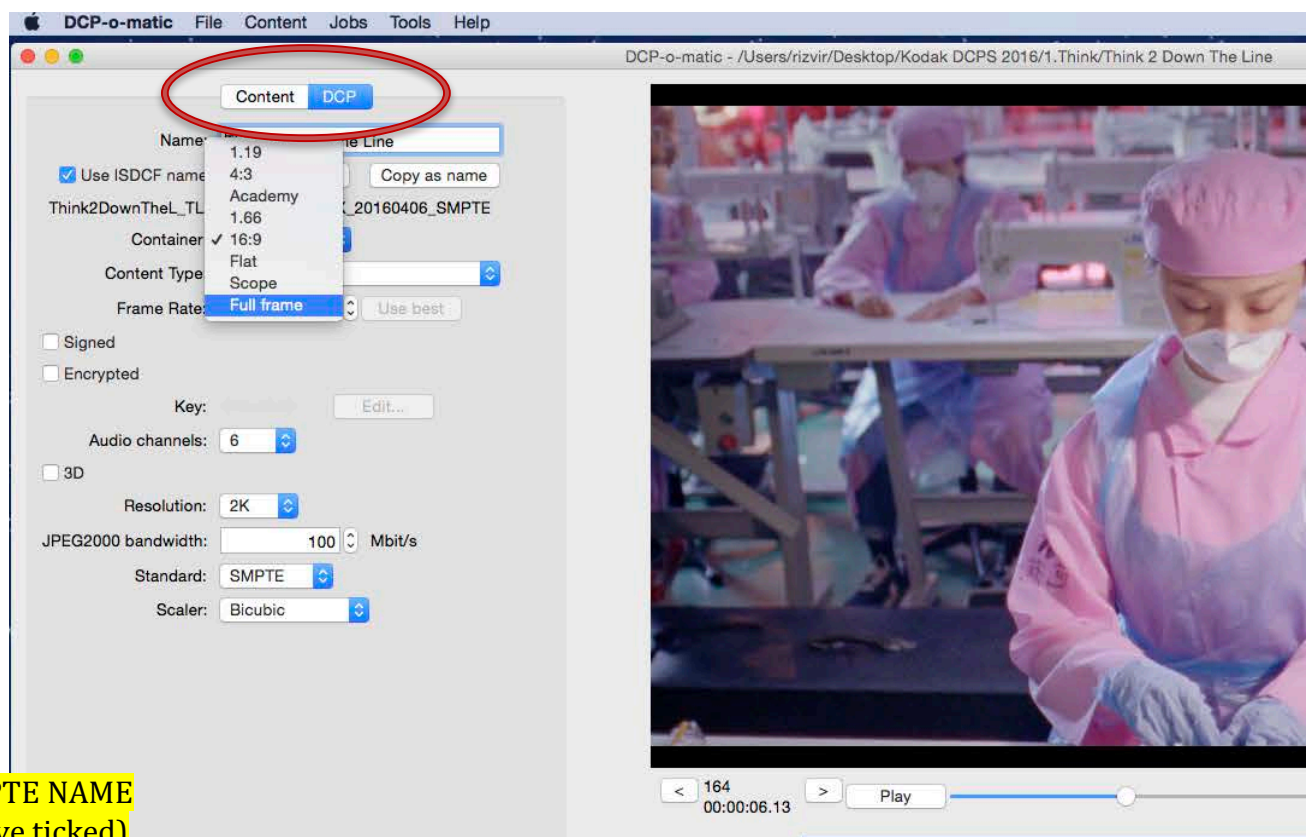
\*Beware: files that are 16:9 should be using 16:9 on both tabs as their setting, and the same goes for 1.85 etc. I'd only suggest using full frame if your film is cropped/masked so the container is actually different to the picture you see. If this is the case you can try different settings (changes viewable in the preview window) until it looks correct.

**(Switch to DCP Tab above these settings)**

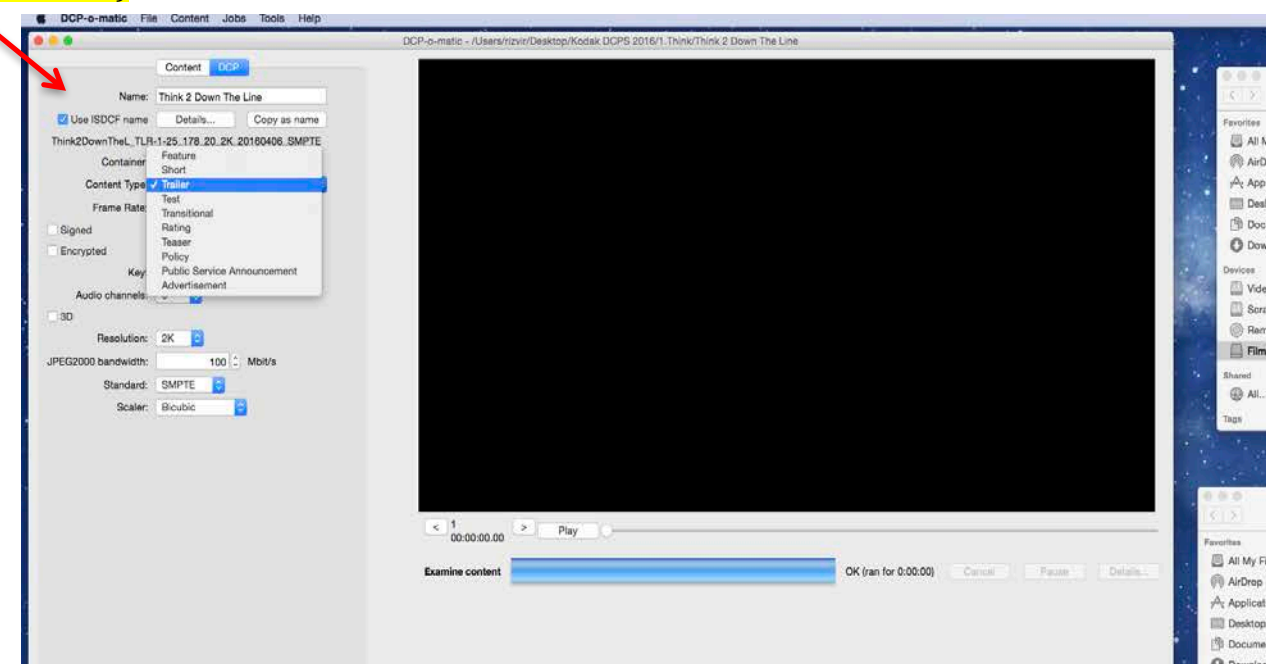
Rename DCP to film name etc

Change Container: to your aspect ratio

Change Content Type: Short



**SMPTE NAME  
(leave ticked)**

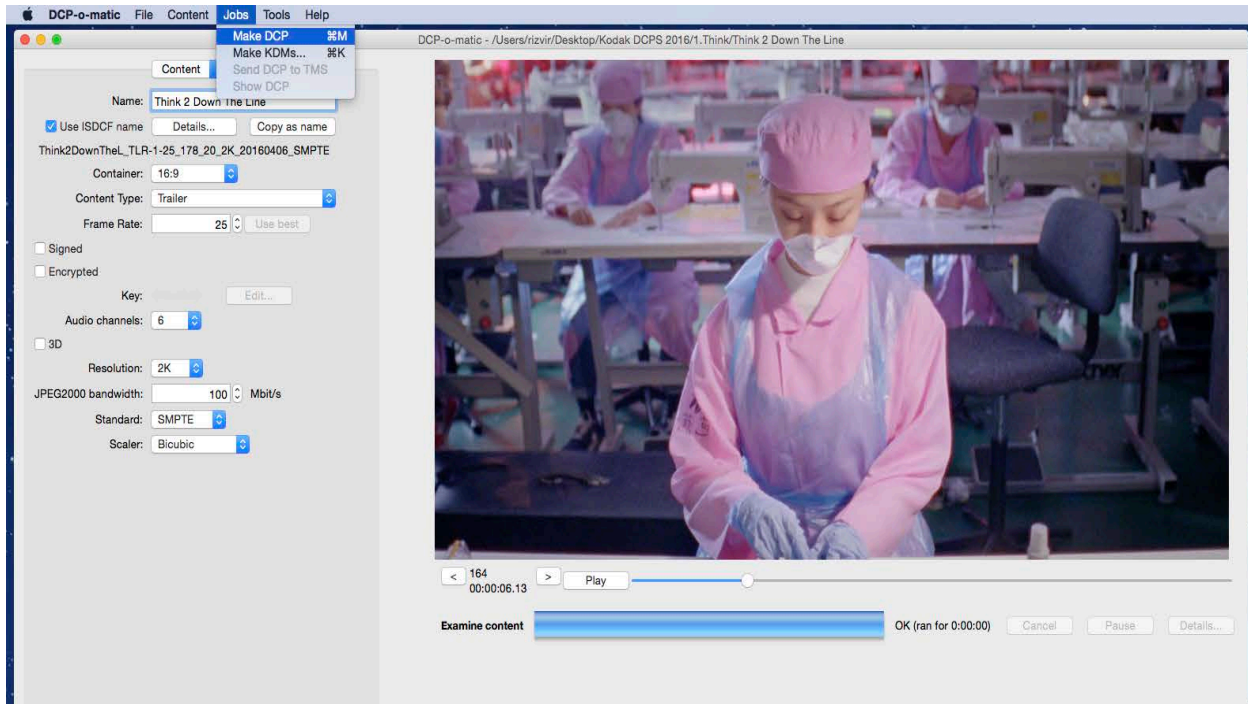




**LEAVE EVERYTHING ELSE AS IS**

The 'SMPTE' (ISDCF) name box should always be TICKED too. Unless specifically requested by a festival, NEVER tick the 'Encrypt' box – this can prevent cinemas from ingesting the DCP.

The 'signed' box will not visually affect your DCP, however I would always UNTICK this as it prevents the DCP from being manipulated by whoever is receiving it.

**STEP 5. Jobs > Make DCP (⌘M)**

**When finished it will say “OK – Ran for (time taken)”**