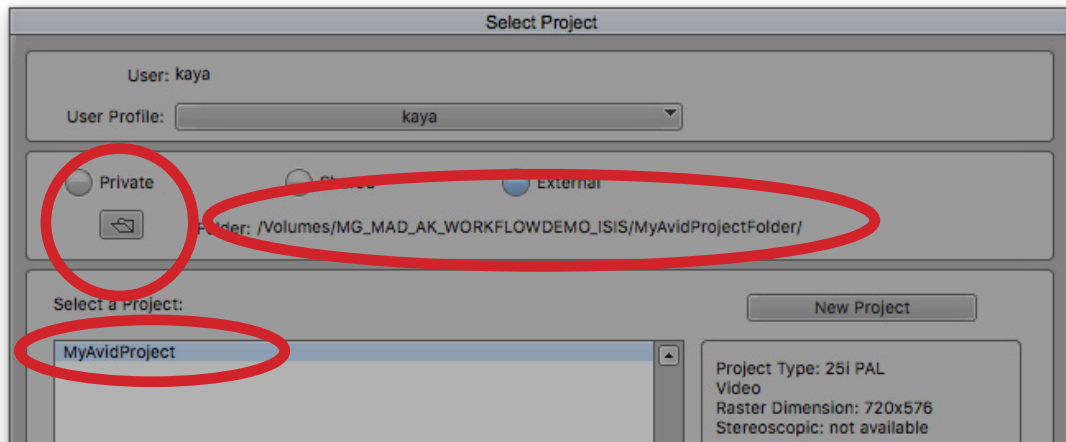
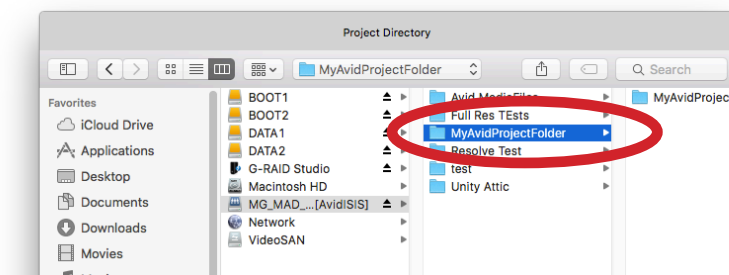


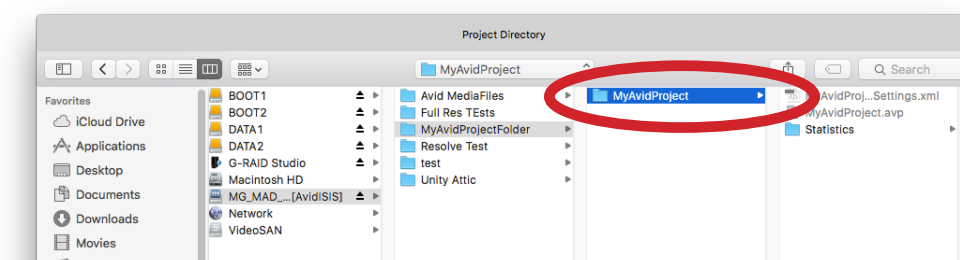
Setting the Avid 'External' Folder Location When using ISIS Server



When setting the External Folder location on the Avid Slect Project Screen, please ensure to pay attention to these pieces of information. You **MUST** set the Folder Path to the folder (or drive) **CONTAINING** the Avid Project Folder. **DO NOT** set this to the Avid Project Folder itself.



CORRECT!
The chosen folder is the one **CONTAINING** the Project Folder. It is **NOT** the Project Folder itself.



NOT CORRECT!
Selecting the actual Project Folder **MAY SEEM TO WORK**, but **THIS WILL CAUSE YOU MANY PROBLEMS TO COME.**

If you make this mistake **JUST ONCE**, and work on your avid Project, this may lead to the following problems:

- 1) It may be more difficult to move between computers
- 2) Some Bins may not show up on different computers, or even on the same computer when you open it again.
- 3) Some Bins or Sequences may not allow your to make changes.
- 4) There may be parts of your Project which may seem to work on some computers, and not on others. This may seem erratic and unpredictable.
- 5) It is often not possible for the technicians to fix these problems; if they can be fixed temporarily, they may reoccur and can not be fixed permanently.